

September 7, 2005

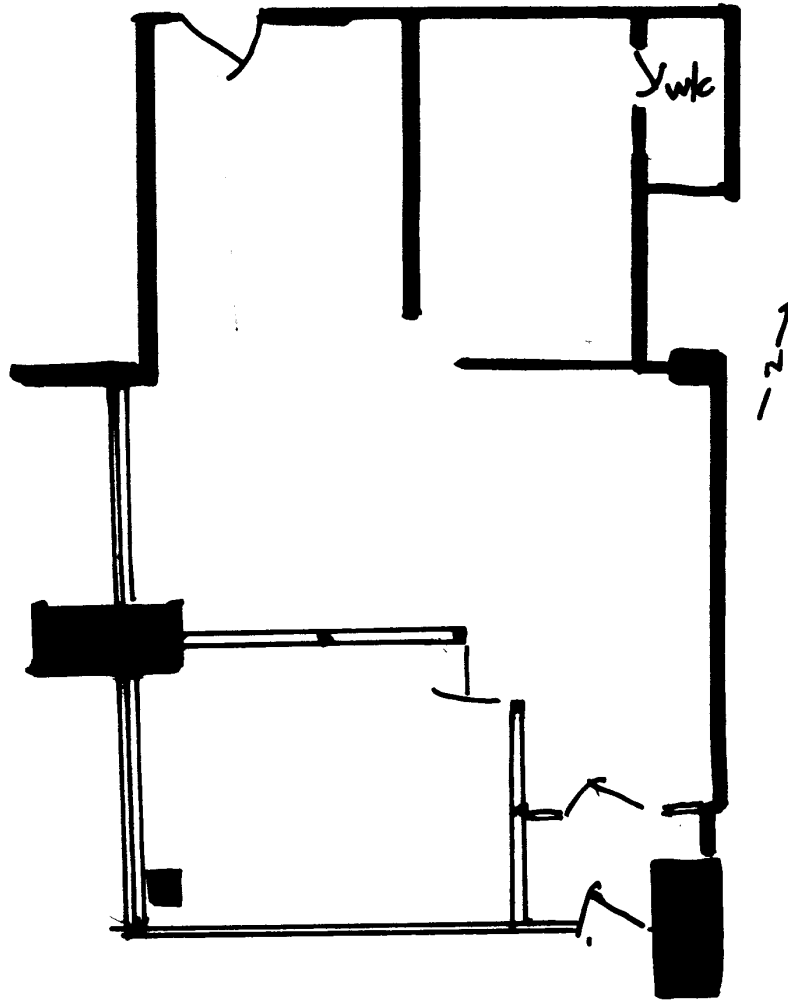
# 2100 ELLESMERE ROAD

EXISTING LAYOUT FOR SUITE 116



RENTABLE SQUARE FEET: APPROXIMATELY 1209 S.F.

Note: Drawing may not be to scale



The Aldgate Group ~ Developers & Managers of Office & Industrial Properties  
2100 Ellesmere Road, Suite 200, Toronto, ON M1H 3B7 ~ 416-431-9622 ext 30

[www.aldgategroup.com](http://www.aldgategroup.com) - [aldgate@rogers.com](mailto:aldgate@rogers.com)