

May 9, 2012

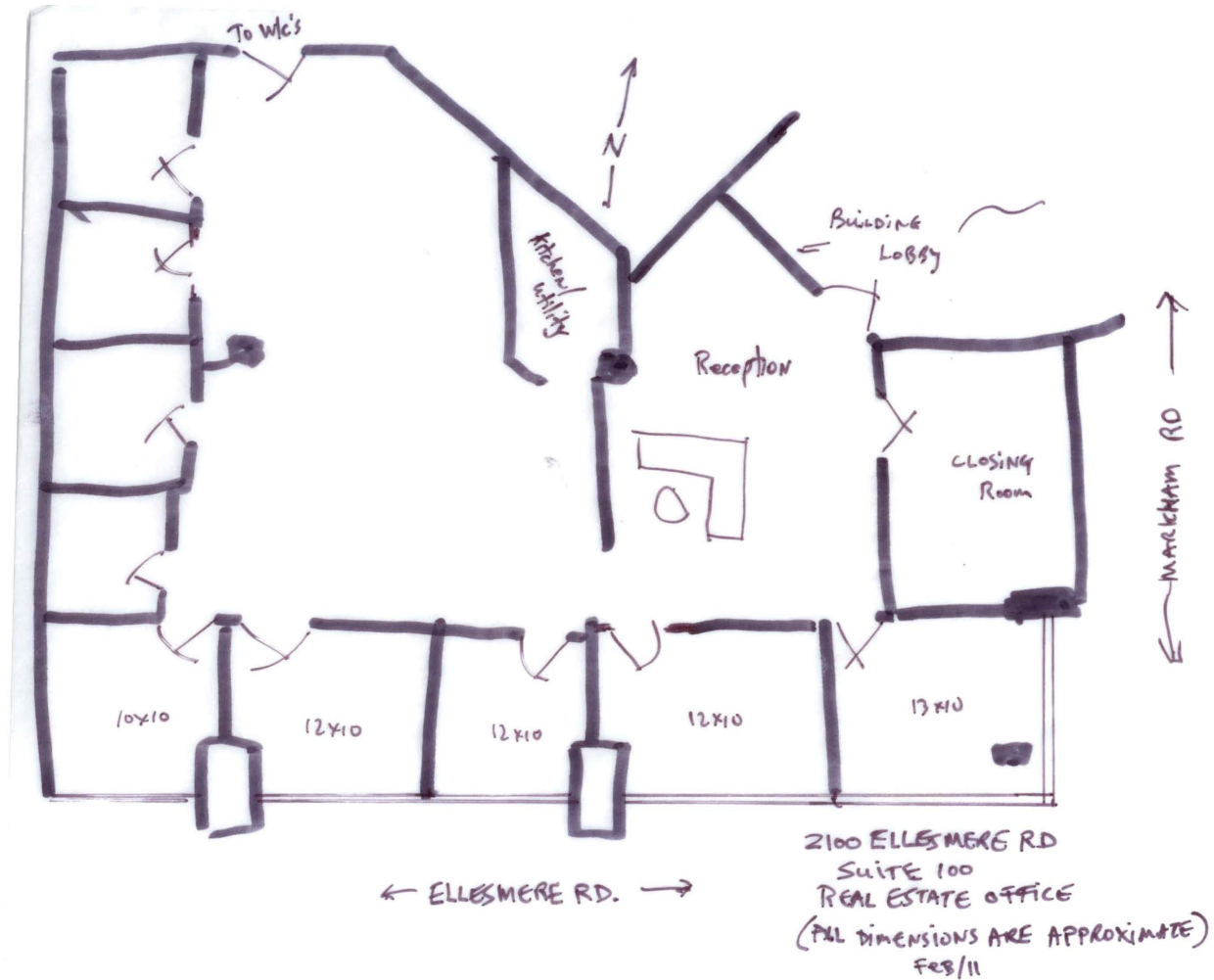
2100 ELLESMERE ROAD

EXISTING LAYOUT FOR SUITE 100



RENTABLE SQUARE FEET: APPROXIMATELY 2938 S.F.

Note: Drawing may not be to scale



The Aldgate Group ~ Developers & Managers of Office & Industrial Properties
2100 Ellesmere Road, Suite 200, Toronto, ON M1H 3B7 ~ 416-431-9622

www.aldgategroup.com - aldgate@rogers.com